

The image features a collection of various medical device components, likely for a hip or knee replacement, scattered across a light gray surface. The components include large metal housings, smaller metal and plastic parts, and several red plastic pieces. A prominent red diagonal band runs across the bottom right corner. The MicroPort logo, consisting of a stylized diamond icon and the word "MicroPort", is located in the upper right quadrant. The word "Evolution" is written in a large, white, cursive font across the red band, with a registered trademark symbol (®) to its upper right. Below "Evolution", the words "REVISION IMPLANT ASSEMBLY GUIDE" are written in a bold, white, sans-serif font.

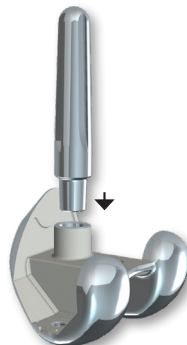
MicroPort

*Evolution*®

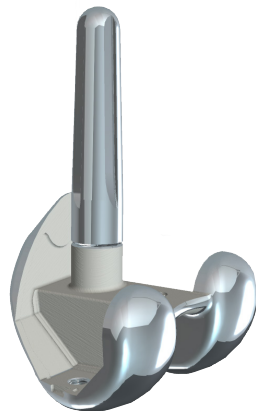
**REVISION IMPLANT ASSEMBLY GUIDE**

# Evolution® Revision Femoral Implant Assembly

**STEM ONLY**



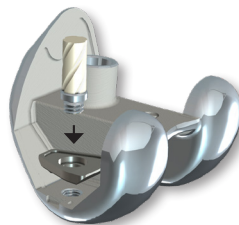
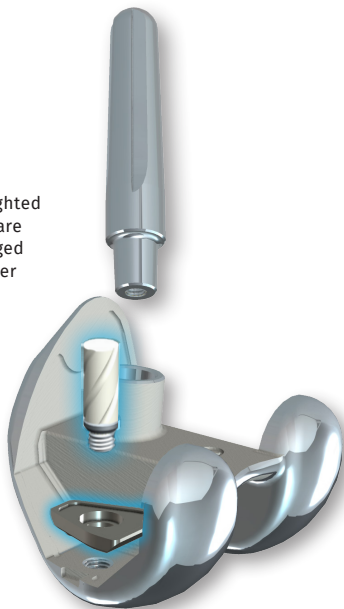
Impact 3 times



# Evolution® Revision Femoral Implant Assembly

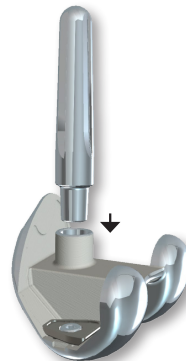
## AUGMENTS AND STEM

Highlighted items are packaged together



Distal augments first

Use the ball nose 3.5 hex driver for easier assembly



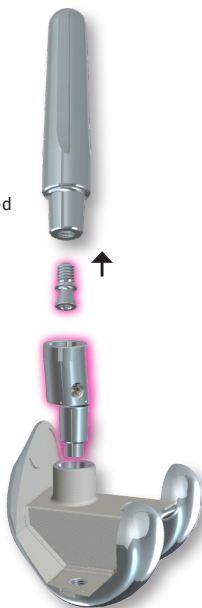
Impact 3 times



# Evolution® Revision Femoral Implant Assembly

## ADAPTER AND STEM

Highlighted items are packaged together



Impact 3 times



Tighten side set screws  
*(Do NOT over-tighten)*



Impact 3 times

1

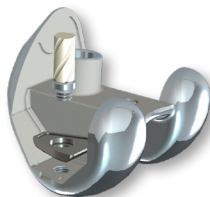
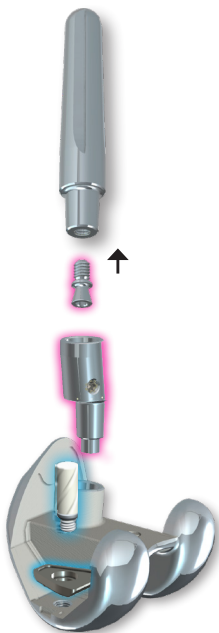
2

3

4

# Evolution® Revision Femoral Implant Assembly

## AUGMENTS, ADAPTER, AND STEM



Distal augments  
first

Use the  
ball nose 3.5 hex  
driver for easier  
assembly



Impact 3 times



Tighten side  
set screws  
**(Do NOT over-  
tighten)**



Impact 3 times

1 2 3 4 5

# Evolution® Revision Tibial Implant Assembly

## COMPLEX PRIMARY TIBIA

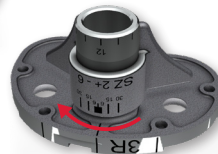
*Note: For a CS/CR/PS insert there is a required secondary locking screw packaged separately. For CCK inserts, the locking screw is packaged with the insert.*



**Left implant**

Turn Keel **counter clockwise** for internal rotation

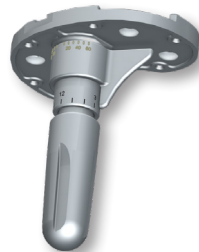
Impact 3 times



**Right implant**

Turn Keel **clockwise** for internal rotation

Impact 3 times



Impact 3 times

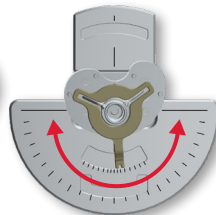
1

2

# Evolution® Revision Tibial Implant Assembly

## STEM ONLY

*Note: For a CS/CR/PS insert there is a required secondary locking screw packaged separately. For CCK inserts, the locking screw is packaged with the insert.*



$\pm 30^\circ$   
Impact 3 times



Impact 3 times

1

2

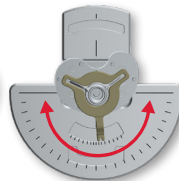
3

# Evolution® Revision Tibial Implant Assembly

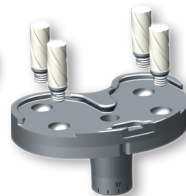
## AUGMENTS AND STEM

*Note: For a CS/CR/PS insert there is a required secondary locking screw packaged separately. For CCK inserts, the locking screw is packaged with the insert.*

Highlighted items are packaged together



$\pm 6^\circ$   
Impact 3 times



Impact 3 times

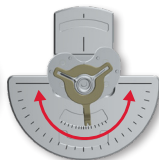
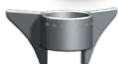
1 2 3 4

# Evolution® Revision Tibial Implant Assembly

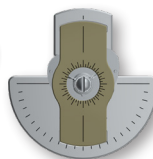
## ADAPTER AND STEM

*Note: For a CS/CR/PS insert there is a required secondary locking screw packaged separately.  
For CCK inserts, the locking screw is packaged with the insert.*

Highlighted  
items are  
packaged  
together



$\pm 30^\circ$   
Impact 3 times



Impact 3 times

Tighten side  
set screws

1

2

3

4

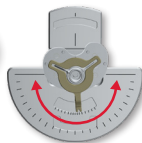
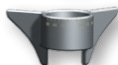
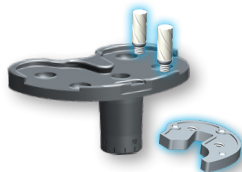
5

# Evolution® Revision Tibial Implant Assembly

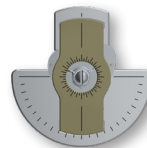
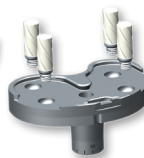
## AUGMENTS, ADAPTER, AND STEM

*Note: For a CS/CR/PS insert there is a required secondary locking screw packaged separately. For CCK inserts, the locking screw is packaged with the insert.*

Highlighted items are packaged together



+/-6°  
Impact 3 times



Impact 3 times

Tighten side  
set screws

1

2

3

4

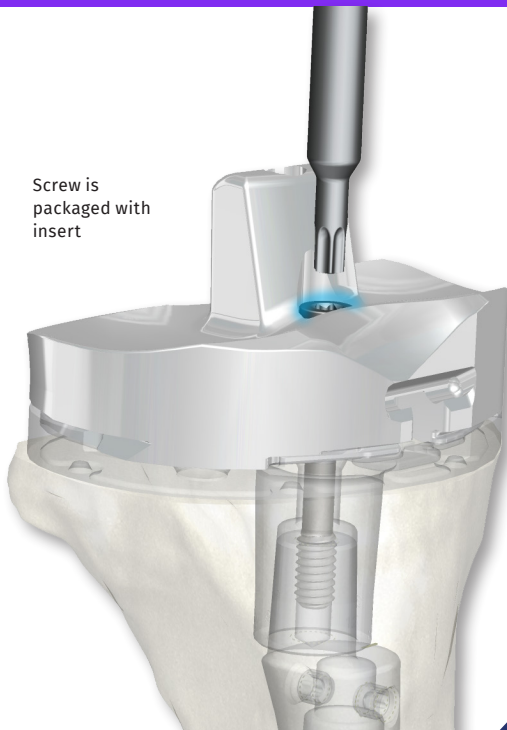
5

6

# Evolution® Revision CCK Insert Assembly

## CCK INSERT

Screw is  
packaged with  
insert



Impact until seated



Torque until there is an  
audible click

1

2

# Evolution® Revision CS Insert Assembly

**CS INSERT**



[illegible][illegible]

[illegible][illegible]

This image shows a single sheet of white paper with horizontal ruling lines. The lines are evenly spaced and extend across the width of the page. There are no margins, text, or other markings on the paper.[illegible]



© MicroPort Orthopedics, Inc. 2021. All Rights Reserved. 015563C AUG2021